

DATASHEET

XTASI-RF input with DVB-T/T2 analysis



XTASI-RF is a pocket-sized **DVB-T/T2** receiver-input device in a robust aluminium housing. The USB-powered modules turn a tablet computer into an economic broadcast measurement system.

parameter-set per DVB-T/T2 channel

- Level (field-strength with k-factor)
- Constellation display MER, EVM
- LDPC, pre and post BCH-FEC errors (T2)
- L1 pre, and post signaling (T2)
- Data PLP, and active PLP signaling (T2)
- Transmitter Parameter Signaling (T)
- Demodulated MPEG transport stream analysis

interfaces

RF Connector	BNC (female) - 50 Ω
	46.5 MHz .. 870 MHz
USB 2.0	Mini-socket, high speed

physical and power

Length	100 mm / 3.9 in
Height	16 mm / 0.6 in
Width	42 mm / 1.7 in
Weight	< 110g & 0.24 lbs
Power supply	USB 2.0, self-powered

fields of use

- Testing of all elements in the T/T2 broadcast chain, including DVB-T2 MI
- Off-air reception and coverage verification (includes antenna factors and GPS control)

benefits

- Simple evaluation of broadcasting equipment
- Hardware and Software from one supplier
- Compact, USB-powered device
- XTASI-ASI sister-modules available

characteristics

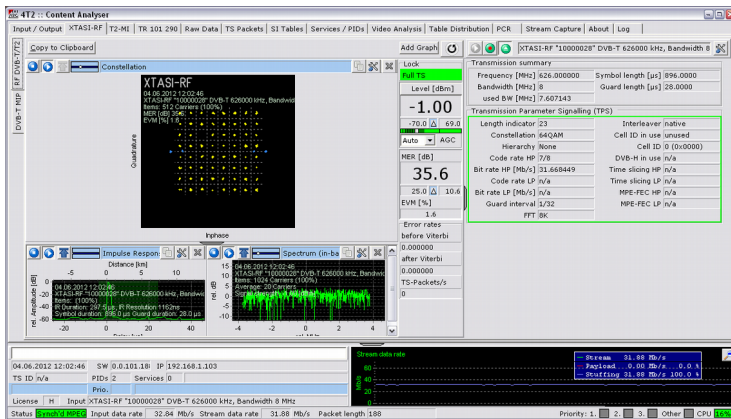
- MER > 42 dB (L1 and PLP readings)
- Level accuracy 1.5 dB (-80...-40 dBm)
- DVB-T/T2 receiver with Constellation, Spectrum and Impulse Response analysis
- Transport Stream analysis
- Picture decoding of all services
- Supporting 64bit Windows®
- Multiple devices on a single computer

environmental

Operating temperature	0 ÷ 55°C (32 ÷ 131°F)
Storage temperature	-20 ÷ 70°C (-4 ÷ 158°F)
Humidity	0 to 95%, non condensing

package contents

- XTASI-RF input module
- Carrying pouch (130x100x60) mm, 150g
- USB high speed interface cable
- 4T2 Content-Analyzer application (download)



Advanced Broadcast Components Ltd

Wacholderstrasse 13
23795 Bad Segeberg, Germany
www.4T2.eu
+49 176 618 177 39