



EME GUARD

Installation Guide

Date :

Our reference :

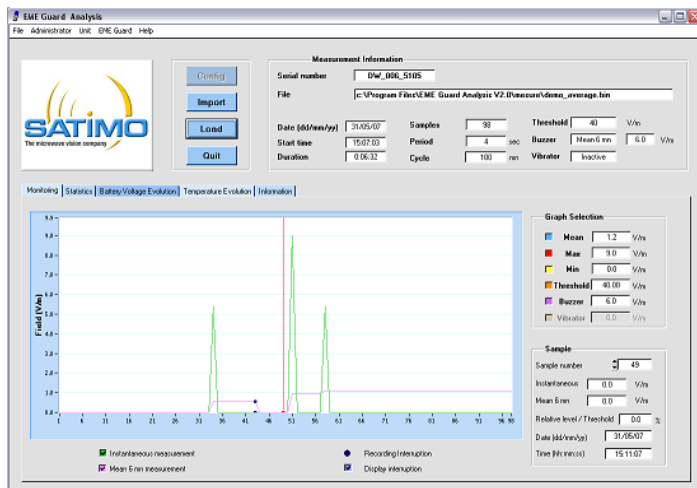


SATIMO Bretagne
Zone du Vernis
225 rue Rivoalon
29200 Brest, FRANCE
Tél. : +33 (0) 2.98.05.13.34
Fax. : +33 (0) 2.98.05.53.87

INSTALLATION GUIDE

Reference:

EME Guard Analysis



EME Guard Analysis

Contents

1	INSTALLING THE EME GUARD ANALYSIS SOFTWARE	3
1.1	MINIMAL CONFIGURATION	3
1.2	INSTALLATION	3
1.3	UNINSTALLATION	6
2	INSTALLING THE USB DRIVERS	7
2.1	AUTOMATIC DETECTION	7
2.2	MANUAL DETECTION	9
2.3	CHECKING INSTALLATION	11

1 INSTALLING THE EME GUARD ANALYSIS SOFTWARE

The EME Guard Analysis software enables both the configuration of the device and the downloading, safeguarding, display and analysis of the measurements taken by the device.

Note 1 : As the processes used to install and uninstall software are highly dependent on the operating system and configuration of the computer, the explanations and illustrations are only given here as a general guide.

1.1 MINIMAL CONFIGURATION

The minimal configuration required is as follows:

MATERIAL CONFIGURATION	
Processor	PC Pentium 500 MHz
Interface	USB Port
Operating System	Windows 98/2000/XP
Memory	256 MB RAM
Free Space	100 MB free on the hard disk

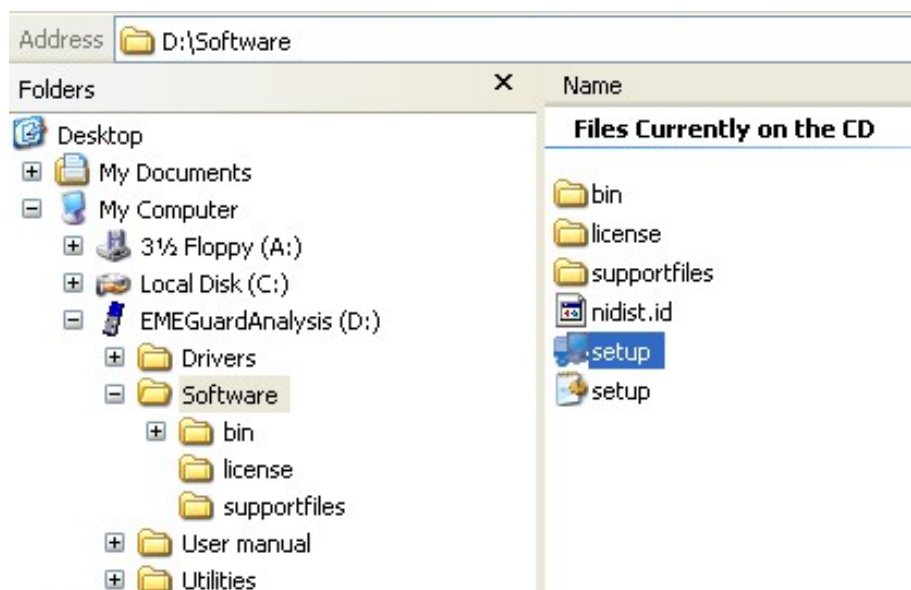
Note 2 : Adobe Reader is required to access the computer version of the User Manual

Note 3 : Microsoft Excel is required to create an Excel report.

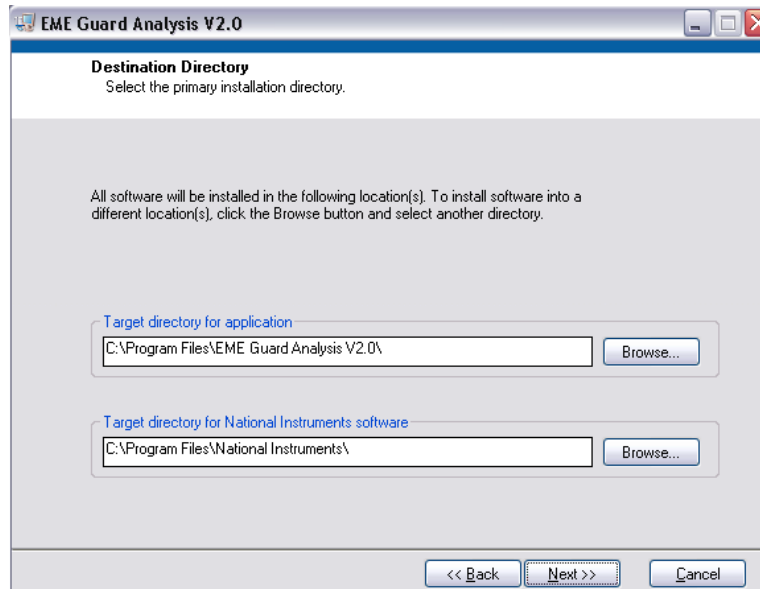
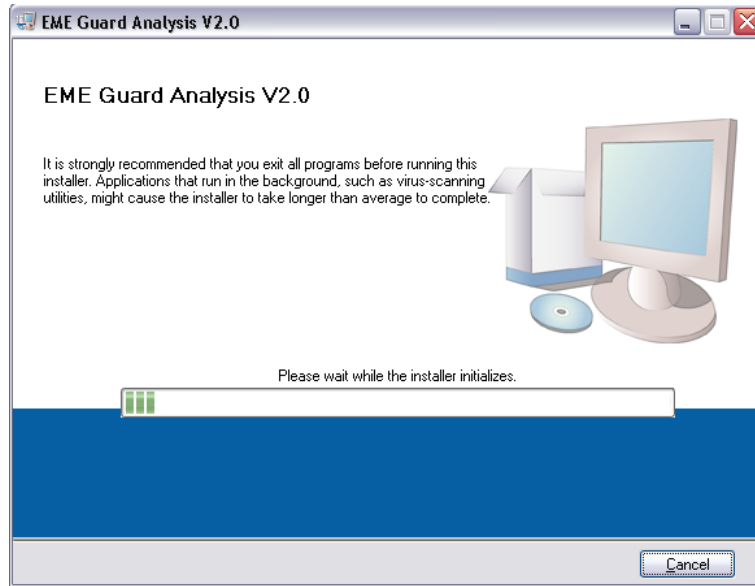
Note 4 : NotePad is required to create a Text report.

1.2 INSTALLATION

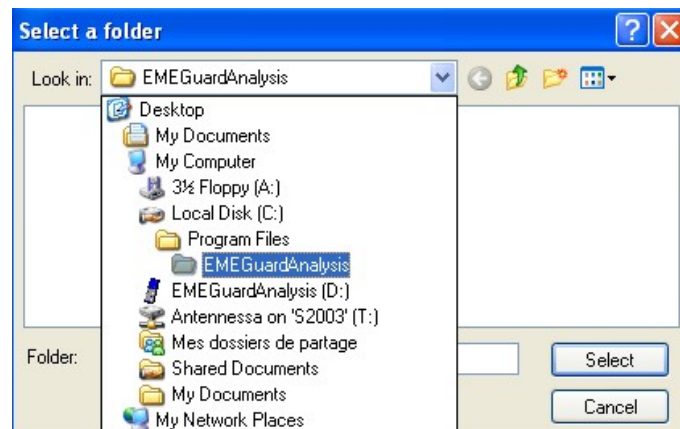
Place the software CD_ROM in your disk player.
The installation program should start automatically.



If this fails, run the **setup.exe** application in the **Software** directory of the **CD_ROM**.

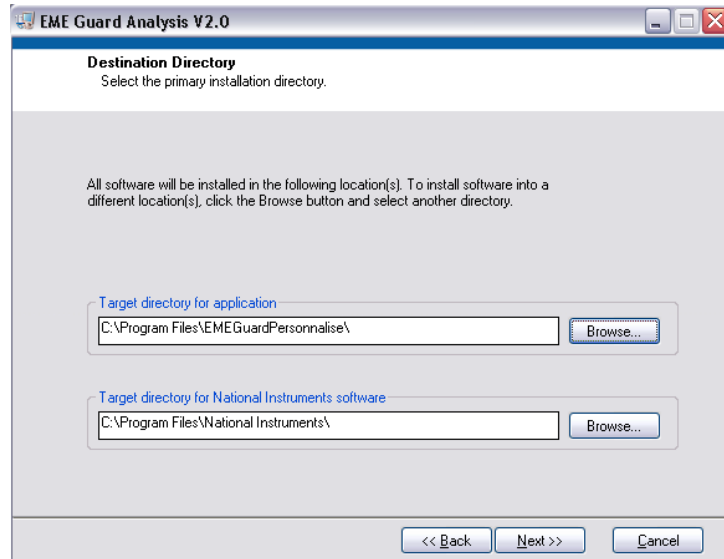


Click on the **Browse...** button to select the installation directory.

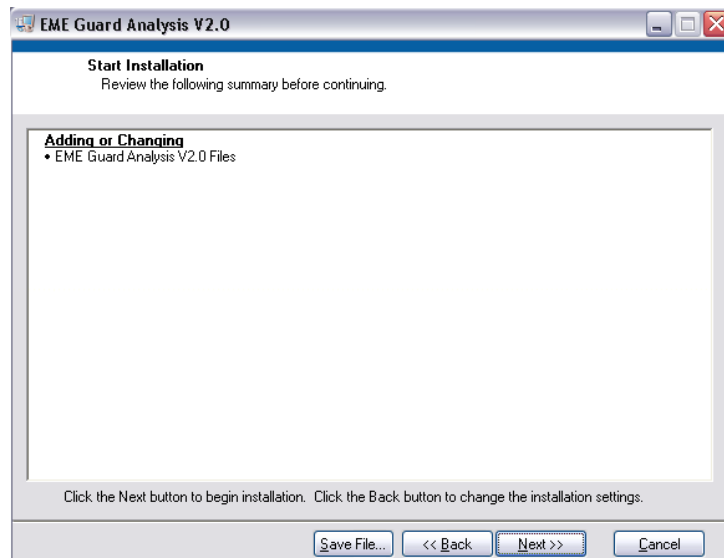


Select and/or create an installation directory then press the **Select** button.

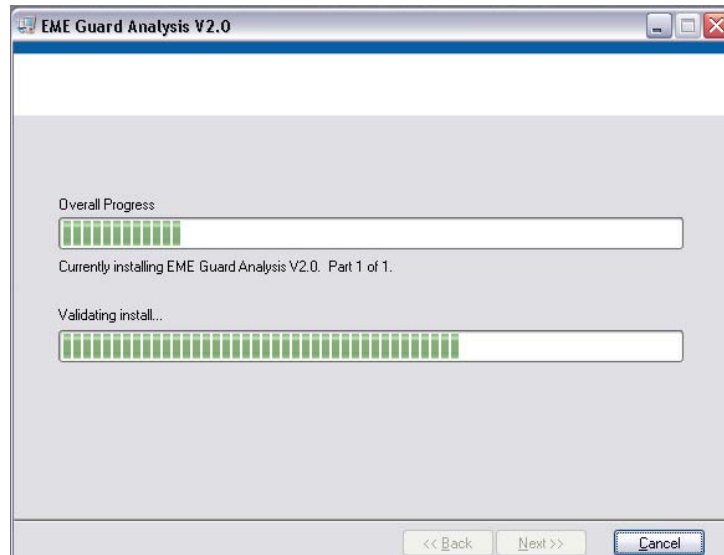
Click on the **Next>>** button.



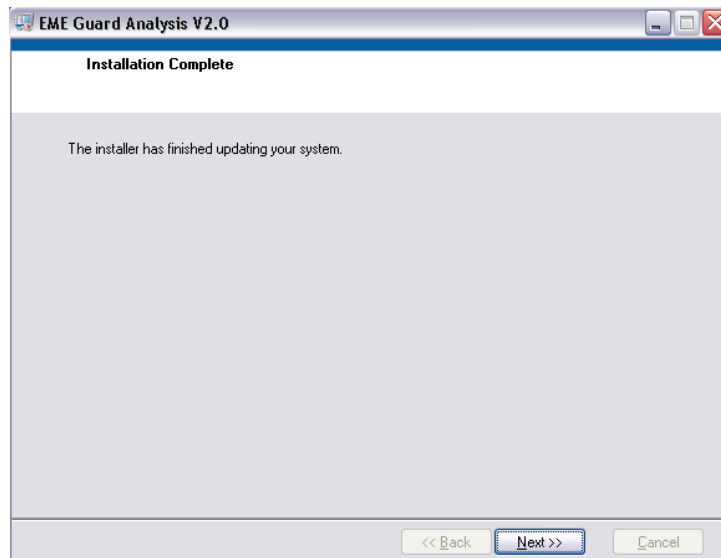
Click on the **Next>>** button.



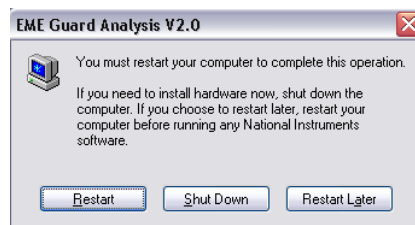
Installation in progress.



Click on the **Next>>** button.

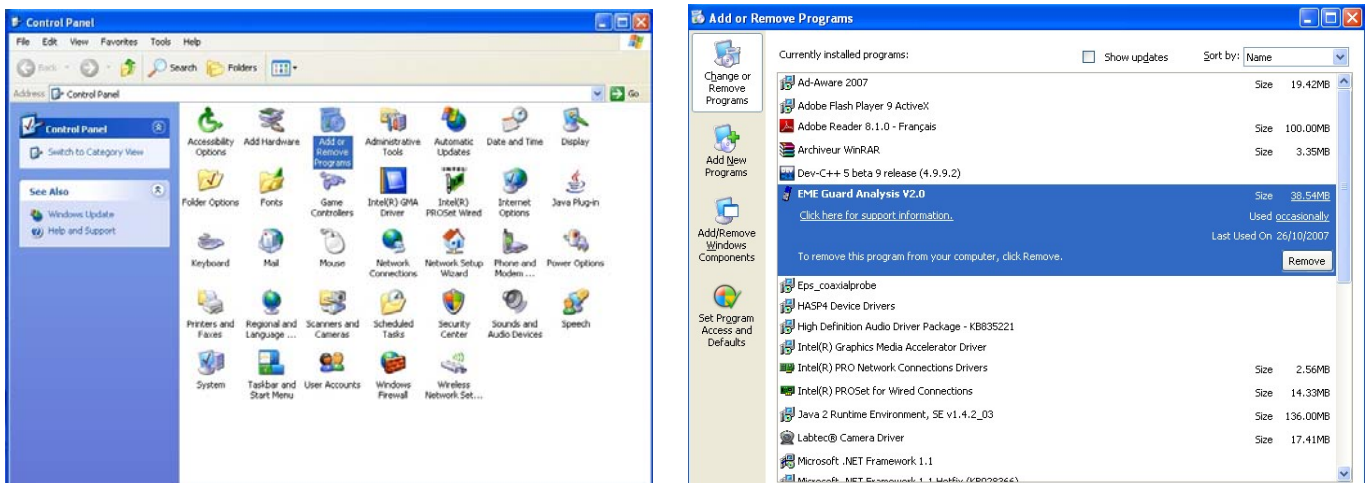


Press the **Restart** button to complete the installation and restart your computer.



1.3 UNINSTALLATION

Open Windows **Control Panel** menu and start the utility **Add or Remove programs**.

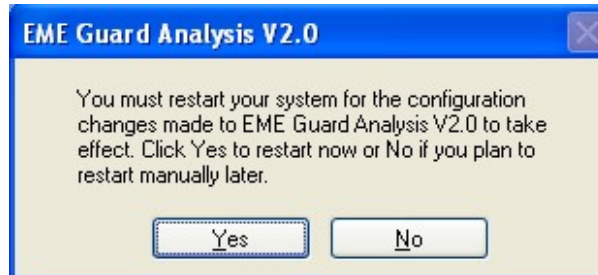


In the list of programs select **EME Guard Analysis V2.0** then click on **Remove**.

Click on the **Yes** button.



Click on **Yes** to finish uninstallation and to restart your computer.



2 INSTALLING THE USB DRIVERS

Before any communication with the dosimeter, the USB port drivers must be installed on your computer. These drivers are in the **Drivers** directory on the installation CD_ROM.

2.1 AUTOMATIC DETECTION

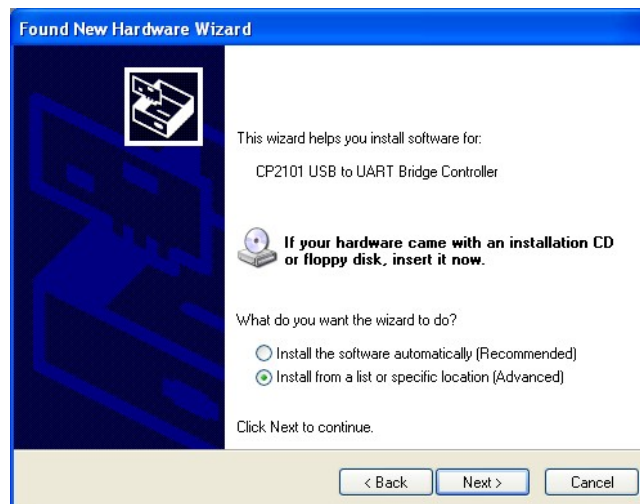
Connect the dosimeter to the PC using the USB cable. Windows will automatically detect the addition of the new material.



Select the option **No, not this time** and click on the **Next>** button.



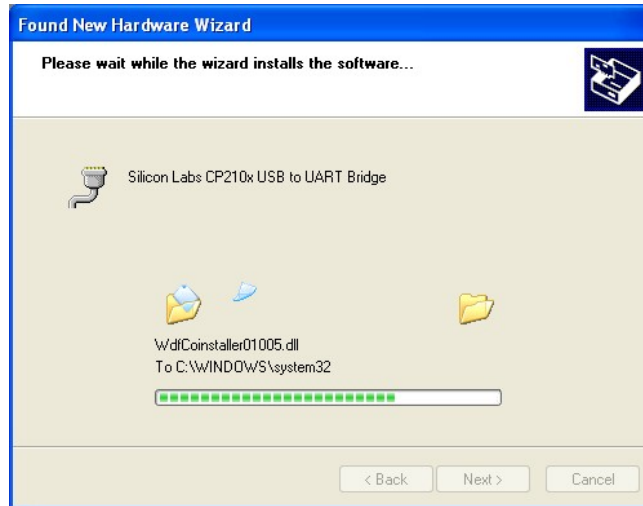
Select the option **Install from a list or specific location (Advanced)** then click on **Next>**.



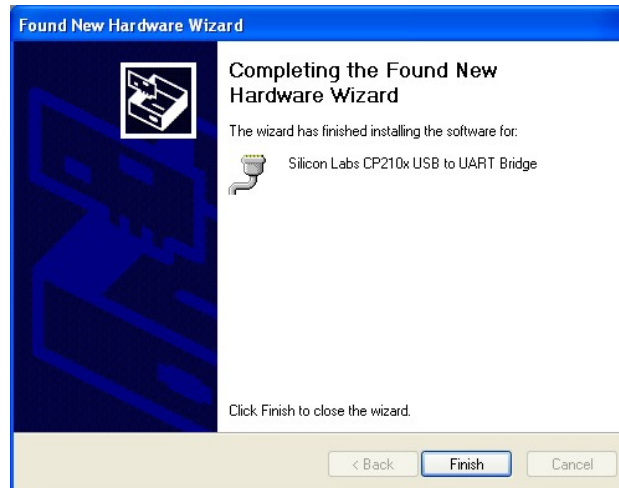
Insert the installation CD_ROM for the EME Guard Analysis Software in the CD player, select the option **search removable media (floppy, CD-ROM)** and then click on **Next>**.



Installation in progress...



Click on the button **Finish**.



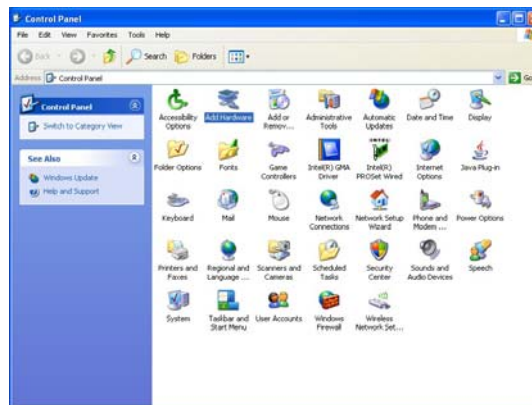
2.2 MANUAL DETECTION

It is possible that the configuration of your computer will not allow the operating system to detect automatically the connected USB peripheral. In that case, manual detection must be launched.

In the **start** menu of Windows, select **Control Panel**.



Start the **Add hardware** utility.



Click on the **Next>** button



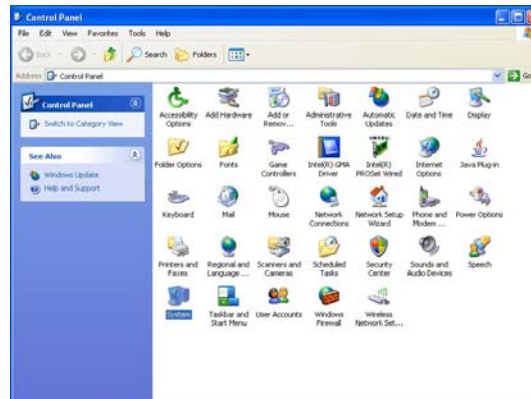
The rest of the procedure is identical to the procedure used for automatic detection (see **2.1 AUTOMATIC DETECTION**).

2.3 CHECKING INSTALLATION

In Windows **Start** menu, select **Configuration Panel**



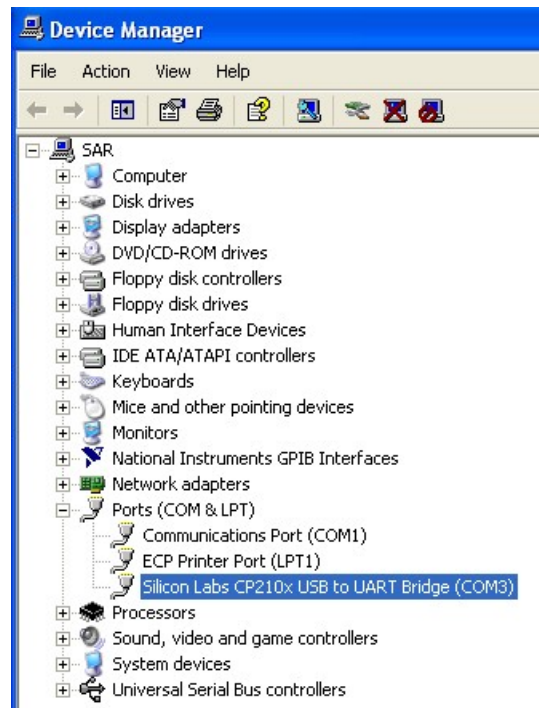
Start the **System** utility.



In the **Hardware** tab, click on the button **Device manager**.



In the **Ports (COM & LPT)** directory, check there is a line entitled **CP210x USB to UART Bridge Controller (COM n)** where n is the port communication number used by the computer when using the EME Guard Analysis software.





**RF Safety Product Center
SATIMO Bretagne**

Technopole Brest Iroise
Z.I. du Vernis
225 rue Pierre Rivoalon
29200 Brest, FRANCE
Tel: +33 (0)2 98 05 13 34
Fax: + 33 (0)2 98 05 53 87
hotline.rf-safety@satimo.fr
www.satimo.com

